

Martha Angus' Nob Hill living room

Martha Angus Inc., marthaangus.com

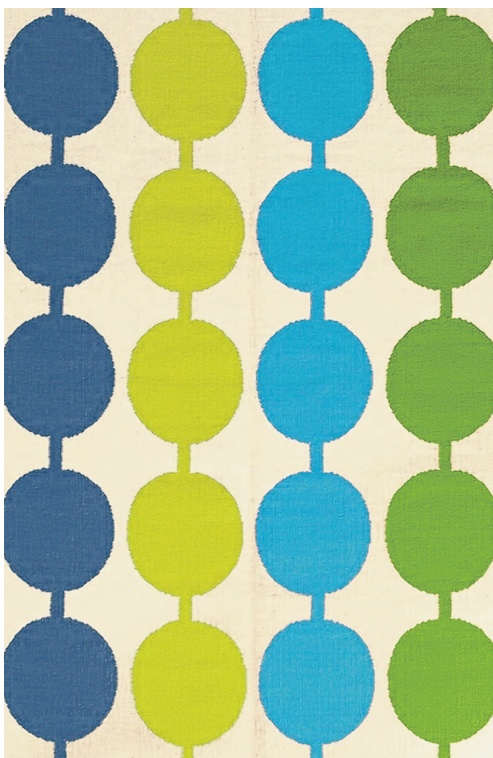
Originally hung in her son's nursery, a valuable Roy Lichtenstein lithograph "Bedroom" (1991) was the motivation behind the witty living room design in Martha Angus' former Nob Hill condo. "The room wasn't large, so I wanted it to be light and airy and lots of fun," says Angus. Playing off the bold canvas, she commissioned a spunky striped-and-dotted rug from Vorwerk in Germany. Mirrored walls expand the space, catching views of the Golden Gate Bridge, and reflective coffee tables cast the room's trademark graphics onto other dimensions. Despite its pop-art flair, the decor is steeped in antiquity: a Gustavian clock and settee have roots in early 19th century Sweden.



GET THE LOOK



“The Stripes” painting by Eche Martinez (\$2,500; gilt.com/home) was inspired by the work of late American Abstract artist Agnes Martin. While its colors are echoed in **Jonathan Adler’s Lollipop rug** (\$695; jonathanadler.com), its straight edges offset the daring globules adorning the hand-loomed floor covering. A kind of happy tension ensues. “I don’t like weak spaces,” says Angus. “I like to decorate with pieces that have spirit and strength.”



The designer unearthed the 1970s mirrored coffee tables in her old living room at a Paris flea market. For the updated look, she took a shine to these stainless-steel **Hex Tables by New York-based Incorporated** both for their David Hicks-inspired geometry and their modular potential. “Ganged together, they make a bold statement; individually, they make chic side tables or TV-dinner trays,” says Angus. \$1,090-\$1,240; propellermodern.com.



Angus willingly admits that the down-filled **Templeton Apartment sofa by Jonathan Adler** is more comfortable than her prim Swedish settee, which is valued at more than \$25,000. The Templeton’s Louis XVI-inspired base embodies the original’s antique cachet. \$3,395; jonathanadler.com.

OPPOSITE PAGE: PHOTO BY PETER MEDILEK INC.; ILLUSTRATION BY VAL B. MINA / THE CHRONICLE. THIS PAGE, CLOCKWISE FROM TOP: ECHE MARTINEZ; INCORPORATED; JONATHAN ADLER; JONATHAN ADLER.